



Machine Vision & Control Automation

Control Easy Technology Sdn Bhd (924757-A)

Industry Machine Vision, Motion, PLC & PC Control Automation Systems.

Education Control Training Systems.

No : 28G & 1, Block C, The Atmosphere, Jalan Atmosphere 5,
43300 Seri Kembangan, Selangor, Malaysia.

Tel : 603-9545 2009

Fax : 603-9545 2010

Email: sales@controlez.com <http://www.control-easy.com>

Control Easy Machine Vision System

Education Imaging Teaching Training Kit

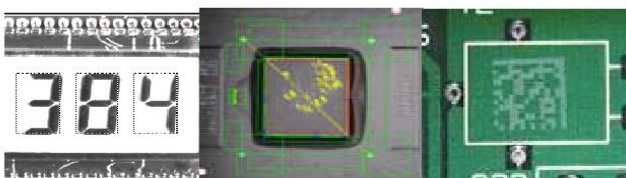
Model : EZ-V8001

This is an educational system to learn the theory and principles of machine vision application. It consists of an image processing board (Matrox Indio frame grabber/Interface card), Vision camera 1280 x 1024 and lens FL 4m, adjustable camera table stand with sensor, Matrox MIL & Matrox Inspector imaging software, PCIe 16 discrete I/O frame grabber interface card and C-Mount lighting illumination devices. Students can design, program, build, and test, step by step, many machine vision applications using the system. The system can be used to learn in PC-Based Image Processing and AI Technology. AI CNNClassIndex step Classification on Golf ball net mask classification on "Good" and "Bad" classification with exposure time(ms) 0.5 and Pretrained CNN file (*.mclass).

The Vision training system consists of the Matrox MIL Imaging software, PCIe Matrox Indio card ready to be integrated into the PC. EZ-V8001 also come with GigE vision camera. The Vision Training System come with Kit & Exercises Applications and Experiments with samples:

Applications and Experiments:

- Pre-Image processing in Image Mapping, Sharpen, Median and Morphological Operation.
- PCB Inspection (Pattern Matching & Geometry Finder) with external proximity sensor trigger & PCB Board
- Label Print & Text Inspection(OCR) with software trigger.
- IC Lead/Pin Measurement and Angle Analysis Inspection.
- Bar code reading on Electronic MCB.
- OCR(Optical Character Recognition) reading on Electronic MCB.
- Pattern Matching switch positioning verification on Electronic MCB.
- Medical Pills Blob Analysis Inspection on Pills counting, diameter, missing and crack.

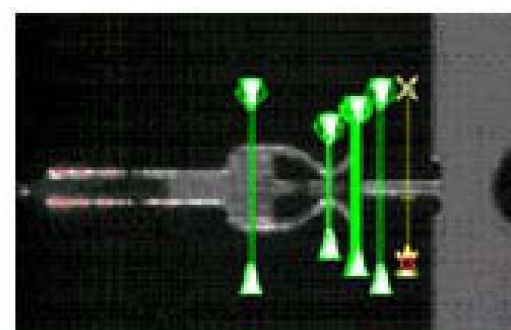


Key Features:

- Utilizes Matrox Imaging systems, includes Matrox Imaging Library(MIL), Matrox Inspector and Matrox Indio frame grabber.
- User friendly Control Easy Vision software (Easy Vision) enables user to easily modify inspections to suit various image processing.
- Sample follow-through examples on applications and experiments are provided to easily learn the PC-based machine vision and control basics.
- Selectable courses from a simple inspection vision system to complicated system of integrated functions with additional external devices.
- Programming in VB.NET® 2015, Visual C++.NET 2015, learning from simple vision functions to applications involving sensors and others.
- Real-life industrial machine vision examples are provided in the system
- Using vision components commonly found in industrial sites, students can quickly apply their skills for practical use.
- Matrox MIL and Inspector manual and all the required software including sample programs are provided.
- SPC Vision Database in Microsoft Excel sheet with VB SQL for Bar chart and statistic.
- 3 Days training for MIL/Inspector
- Sensor for external trigger

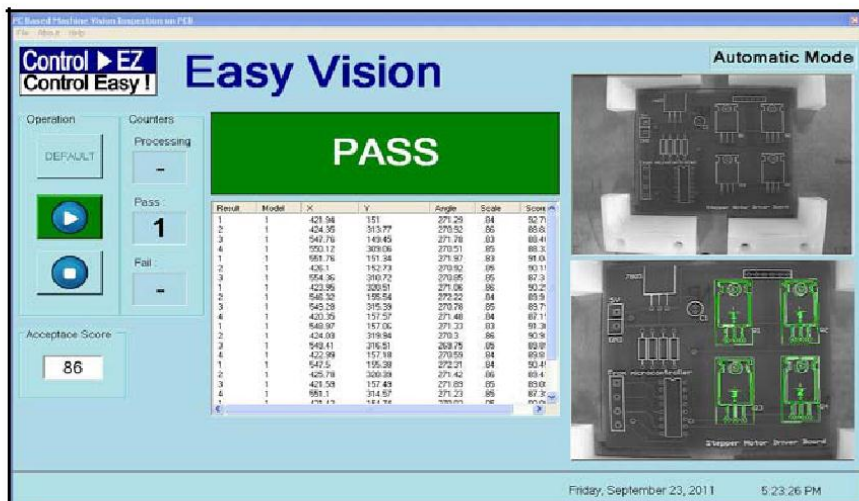
See in color

Matrox Iris GT smart camera brings color to your vision



Matrox Imaging Library (MIL) is a high - level programming library with an extensive set of optimized functions

Optimized functions for image capture, image processing (e.g., point-to-point, statistics, filtering, morphology, geometric transformations, FFT and segmentation), pattern recognition, registration 5, 6, blob analysis, edge extraction and analysis, measurement, metrology 7,8, character recognition, 1D and 2D code reading, calibration, graphics, image compression, display and archiving.



System Specifications :

- Product Type: PC Based Machine Vision
- Vision Digital Color GigE Camera
- Resolution : 1280 x 1024
- Operation Mode: Easy Vision Software and External trigger
- Kits Dimension: 400 mm (L) x 500mm (W) x 25 mm (D) x 790 mm (H)
- Lense FL 4m 1/1.8"; 4mm; 5MP
-

System Accessories :

- Vision Camera Training Kit with Base 400mm(L)x500mm(W)x25mm(D)x790mm(H)
- Aluminium Profile Based Plate
- Aluminium Profile with adjustable bracket 424mm(L) X 350mm(W) X 30mm(H)
- Adjustable lens focus height 0-200mm
- 2 white Back Lighting 95mm(L) X 85mm(W) X 15mm(H)
- 1 C-Mount Red Lighting 52mm(L) X 52mm(W) X 8mm(H)
- 1 Adjustable Light Potentiometer
- 1 green LED Indicator
- 1 Emergency button to switch white Back light & red Ring light
- 2 Adjustable shelves light mounting
- Switches & Button Box Size 150mm(L) X 68mm(W) X 60mm(H)
- Vision camera output LED Size 35mm(L) X 28mm(W)
- Vision camera input opto sensor E18-B03N1

No 28 G & 1, Block C, The Atmosphere
 43300 Seri Kembangan,
 Selangor, Malaysia.
 Tel : 603-9545 2009 Fax : 603-9545 2010
 Email: sales@controlez.com

